

Cao Phong Reforestation Project

- First Small-scale AR-CDM Project in Vietnam -



Akihiko Sasaki

NIPPON KOEI

Challenging mind, Changing dynamics

1

Project Summary

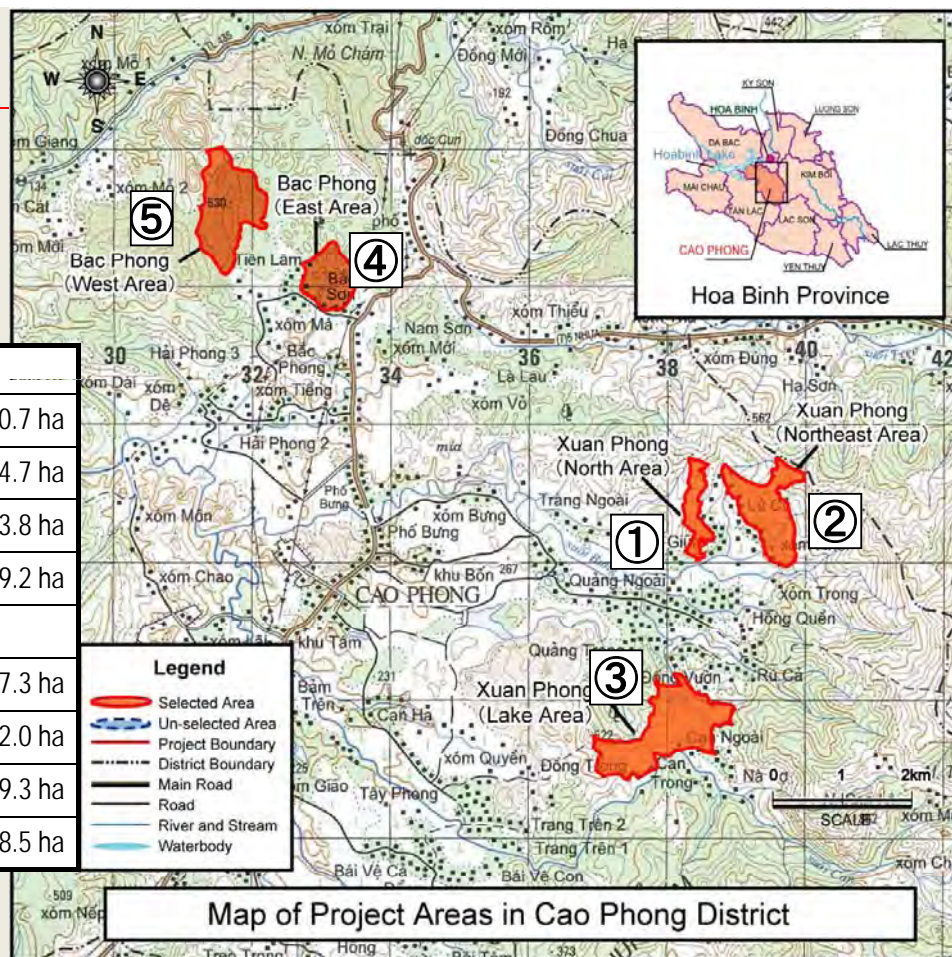
Project participants	Forest Development Fund (NPO) (established by Cao Phong DPC and Vietnam Forest University in April 2008)
Registration	28 April 2009
Methodology	AR-AMS0001 / Version 04.1
Credit and credit period	tCER, 16 years
Planting area	308.5 ha.
Land use before project	Degraded production forest land allocated to local farmers
Households participated	310 households
Brief history	<ul style="list-style-type: none">◆ Formulated under JICA Development Study "Capacity Building for AR-CDM Promotion in Vietnam" (Oct. 2006 – March 2009)◆ JICA also provided fund for project validation by DOE◆ Honda Vietnam donates fund for project implementation (VND 3.5 bil. = US\$185,000)
Present status	<ul style="list-style-type: none">◆ Planting activities started in Sep. 2009 and achieved 135ha◆ Remaining area (173.5 ha) will be planted in 2010

2

Project Location

Net planting area

Xuang Phong commune		
Site-1	Lu cu vil.	20.7 ha
Site-2	Nhoi vil.	64.7 ha
Site-3	Can vil.	93.8 ha
Sub-total		179.2 ha
Bac Phong commune		
Site-4	Bac son vil.	57.3 ha
Site-5	Ma vil.	72.0 ha
Sub-total		129.3 ha
TOTAL		308.5 ha



Project Area

- ◆ Forests were cleared in 1970s to increase food production
- ◆ Degraded forest land has been allocated to local farmers
- ◆ The area is not used for economic activities
- ◆ Farmers do not have fund for reforestation
- ◆ Farmers desire recovery of forest and income from forest






Project Area





5

Project Formulation & Registration Process

<p>Jan.-Mar. 2007</p>	<ul style="list-style-type: none"> ◆ Site selection ◆ Boundary survey & baseline biomass survey <div style="display: flex; justify-content: space-around;">   </div>
<p>June 2007</p>	<ul style="list-style-type: none"> ◆ Consultation with project stakeholders (local governments & farmers) 
<p>Jul.-Oct. 2007</p>	<ul style="list-style-type: none"> ◆ Identification of the owners of delineated forest land ◆ Formulation of reforestation plan ◆ Confirmation of the project boundary ◆ Preparation of Draft PDD ◆ Consultation with project stakeholders <div style="border: 2px solid black; border-radius: 50%; background-color: yellow; padding: 10px; width: fit-content; margin-left: auto;"> <p>Negotiation with Honda Vietnam on CSR contribution</p> </div>

6

Project Formulation & Registration Process

May 2008	◆ Signing a contract with DOE
Jul.-Nov. 2008	<ul style="list-style-type: none"> ◆ Field validation by DOE ◆ Responses to the clarifications raised by DOE ◆ Finalization of PDD <div style="display: flex; justify-content: space-around; align-items: center;">   </div>
Jan. 2009	◆ Request for project registration (through DOE)
Mar.-Apr. 2009	◆ Minor corrections (x 2)
28 Apr. 2009	◆ Registration

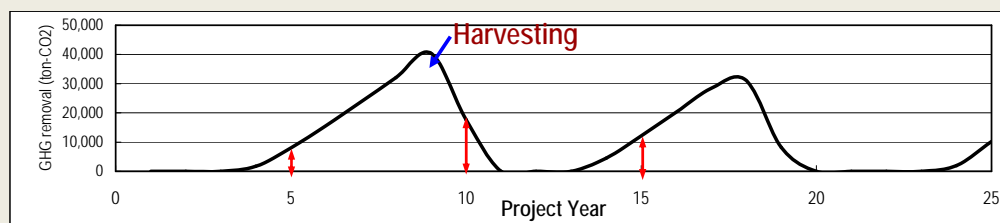
7

Some Aspects of Planning

◆ Harvesting rotation (8 years vs. 15 years)

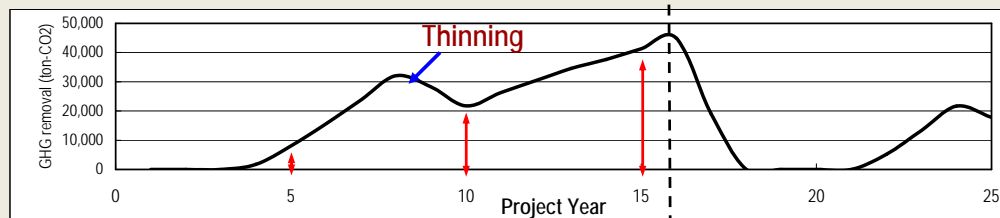
8 years

Typical rotation of production forests in VN



15 years

More tCER is expected than short rotation. Expected benefits from timber is also higher.



◆ Incentives for participating farmers

- ◆ Need to provide financial incentives to participants – **at least VND 3.0 mil/ha, equivalent to about 30% of labor cost of forest development during initial 4 years**
- ◆ Provision of technical and financial assistance to fodder crop cultivation – **to minimize free grazing of cattle and fulfill the needs of fodder**

8

Lessons Learned

- Developing PDD of small-scale AR-CDM is not difficult but validation is cumbersome – *it is necessary to collect proof of important aspects of AR-CDM project such as land eligibility, additionality, participation of poor community, etc.*
- PDD should be prepared simple while satisfying all requirements described in the PDD guidelines – *to avoid unnecessary justification*
- Better to use the default values given in the approved methodology as much as possible – *to avoid demonstration of the appropriateness of measured values*
- Generally, plans of community-based forest management projects are rather rough in terms of areas planted, complex in terms of species selected, and implemented flexibly - *it is difficult to make such projects as AR-CDM projects*
- The project should provide more support to the participants in terms of livelihood development/ improvement – *essential for project sustainability*

9

HONDA
The Power of Dreams



Thank you for your attention!



NIPPON KOEI
Challenging mind, Changing dynamics

10