

# **COUNTRY REPORT ON JIFPRO PROJECTS IN MYANMAR**



**ZAW WIN**  
**Forest Department**  
1<sup>st</sup> December, 2011

1

## **CONTENTS**

### **I. INTRODUCTION**

- ▶ Panelist introduction
- ▶ Country profile
- ▶ Situation of forest
- ▶ Our valuable forest

### **II. JIFPRO'S PROJECT REPORT**

### **III. FUTURE PROSPECT**

2

# I. INTRODUCTION

3

## I. Introduction of panelist

- **ZAW WIN**
- STAFF OFFICER, NYAUNG OO DISTRICT
- PROJECT MANAGER OF JIFPRO PROJECT
- **FOREST DEPARTMENT,**  
MINISTRY OF ENVIRONMENTAL CONSERVATION AND FORESTRY
- B.Sc (Forestry), graduated in 1991 from University of Forestry
- Joined to Forest Department since 1992 and served as Range Officer for (10 ) years, and then promoted as Staff Officer, Project Manager
- Afforestation, Conservation of natural forests, Establishment of Community Forest

4

# Country Profile



- **Basic information**
  - ▶ Total land area 676,577 km<sup>2</sup>
  - ▶ Population: 60 million (2011)
  - ▶ Capital: Nay Pyi Taw
  - ▶ Ethnic group: over 100
  - ▶ Religion: Buddhist 85%, Christian 10%, others 5%
- **Economic aspect:**
  - ▶ Main industry: Agriculture, Natural Gas, Forestry
  - ▶ GDP per capita: 846 US\$

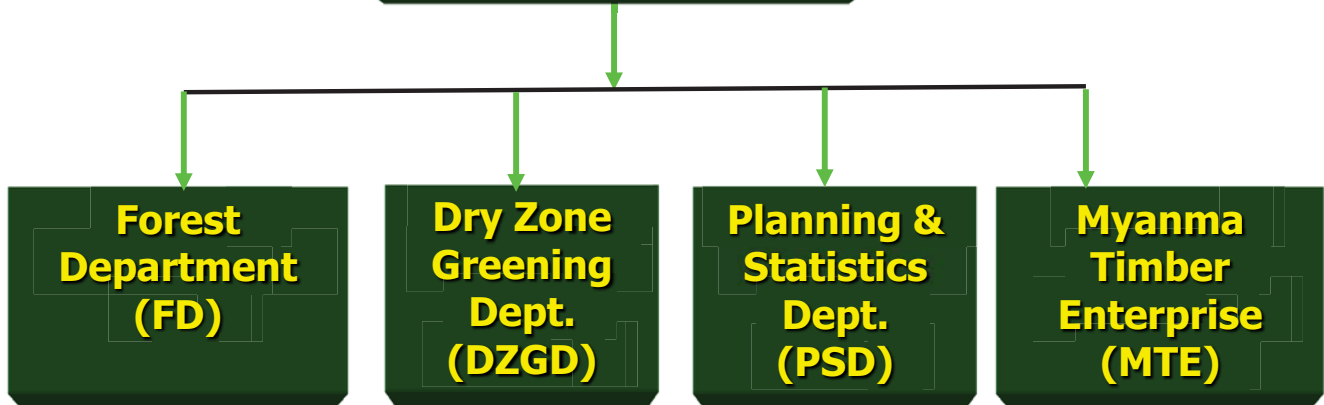
- **Climatic aspect:**

- ▶ Precipitation in capital: Nay Pyi Taw -1,460 mm (2010)
- ▶ Average temperature in capital: Nay Pyi Taw: 32.5°C
- ▶ Rain season: Jun ~ Oct    Dry season: Nov ~ May

## Organization Chart of Ministry of Environmental Conservation and Forestry



**MOECAF**





# Forest Cover Status

❖ **Total Forested Area 353,747 km<sup>2</sup>**  
( 47 % of country's total land area)

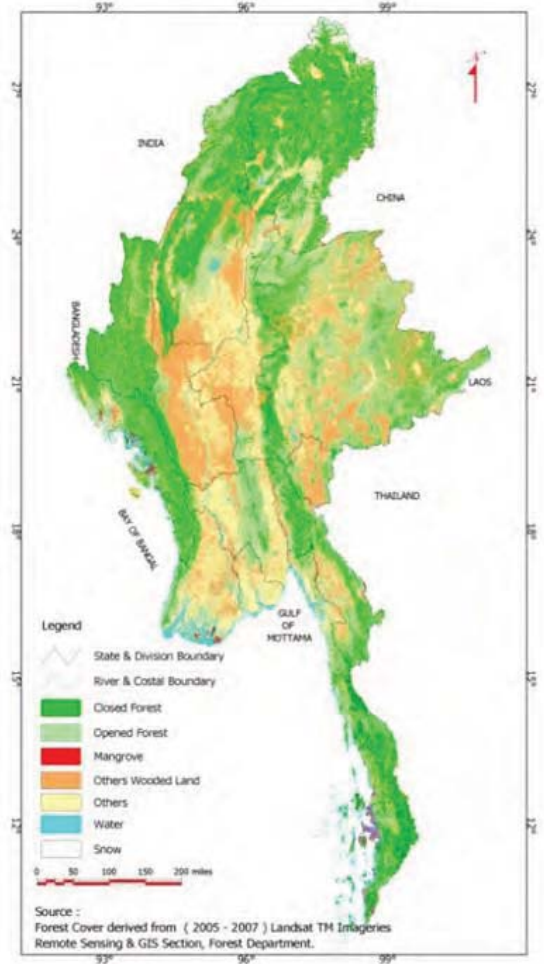
❖ **PFE Area 197,899 km<sup>2</sup>**

## Permanent Forest Estate (PFE)

Legal classification	Area (km <sup>2</sup> )	% of forest area
Reserved forest	121,842.91	34.4
Protected public forest	40,949.60	11.6
Protected area system	35,106.85	9.9
<b>Area of PFE</b>	<b>197,899.36</b>	<b>55.9</b>

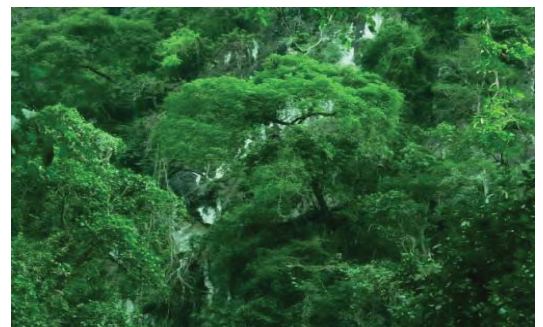
Source: Forestry in Myanmar, 2011

Forest Cover Status of Myanmar (2010)



# Forest Types

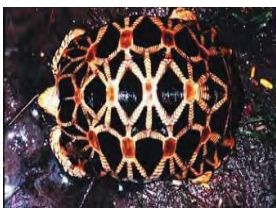
Forest types	Area (km <sup>2</sup> )	% of Total forest area
Tidal, beach, dune and swamp forest	13,750	4
Hill and temperate evergreen forest	89,378	25
Semi evergreen and evergreen forest	55,004	16
Mixed deciduous forest	134,068	38
Deciduous dipterocarp (Indaing) forest	17,187	5
Dry forest	34,377	10
Fallow land	9,983	2
<b>Total</b>	<b>353,747</b>	<b>100</b>



# Values of Forest

- ◆ Greening effect and ameliorating the local climate
- ◆ Carbon sink sources
- ◆ Protection of soil erosion
- ◆ Economic development (through forest products, ecotourism, green economy)
- ◆ National heritage
- ◆ Recreation, Scientific studies, etc.
- ◆ Home and breeding ground for wildlife
- ◆ Disaster Risk Reduction

9

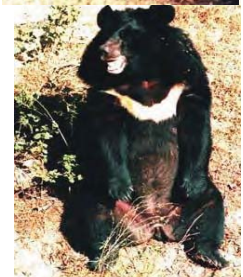


## Biodiversity

### Wildlife Resources

Myanmar is often cited as the last frontier of global biodiversity in Asia. Similar to the abundance of tree species, the country is also rich in wildlife species.

Mammals = 300,  
Birds = 1,000,  
Reptiles = 360,  
Butterflies = 1,200,





# Plant genetic resources in Myanmar

r

Sr. No.	Categories	No. of species
1	Plant	11,800 (genera=2,371) (family=273)
2	Bamboo	96
3	Rattan	50
4	Shrubs	1696
5	Orchids	841



## Main Causes of Deforestation and Degradation

- ❖ Over exploitation
- ❖ Repeated logging in accessible areas
- ❖ Illegal logging
- ❖ Fuel wood and Charcoal making
- ❖ Expansion of agricultural lands
- ❖ Urban expansion (infrastructure development)
- ❖ Shifting cultivation
- ❖ Population Pressure

## II. JIPFRO'S PROJECT REPORT

13

### Accomplishment 1:

Project 1: Forest for the Green Earth I

1997 ~ 1999, Dahatsi PPF, 360 ha



This plantation area is funded by donors such as TOKYOMOKKOSHO and WAKANYAKU.



## Project 2: Japan and Myanmar Friendship Afforestation Project

1997 ~ 2000, Kyu-pin-kwe PPF, 450 ha



This plantation area is funded by donors such as NIKKEISHIMBUN and FUJI-COUNTRY.

## Project 3: Forest for the Green Earth II

1999 ~ 2002, Kyauk-Ku proposed PPF, 300 ha



This plantation area is funded by donors such as TOKYOMOKKOSHO.



## Project 4: Forest for the Green Earth III – Wakingyi, Community Forest Project 2003 ~ 2007, Wakingyi village, 100 ha



This plantation area is funded by donors such as RINGBELL.

17

## Project 5: Sade Watershed Plantation Project through Community Participation (**UMEDA FOREST**) 2004 ~ 2006, Sade village, 100 ha



This plantation area is funded by a personal donor named Mr. UMEDA.

18



# Project 6: Shwehling, Pyun and Kasauk

## Community Forest Project

2005 ~ 2008, Shwehling, Pyun and Kasauk villages, 100 ha



This plantation area is funded by donors such as TAKEO and RINGBELL. <sup>19</sup>

## On-going Project

### Kabani Community Forest Project

2008 ~ 2012, Kyaukku proposed PPF, 90 ha

2012 ~ 2013, Extension area, 30 ha (Total 120 ha)



Before Planting in 2008



# Kabani Community Forest Project, 2008 ~ 2012 Kyaukku proposed PPF,90 ha



After Planting in 2011

## RINGBELL CO., LTD. FOREST





# TOKYOMOKKOSHO CO., LTD. FOREST



23

# TAKEO CO., LTD. FOREST



4



## MITSUUROKO CO., LTD. FOREST



25

## WAKANYAKU MEDICIAL INSTITUTE CO., LTD. FOREST



26

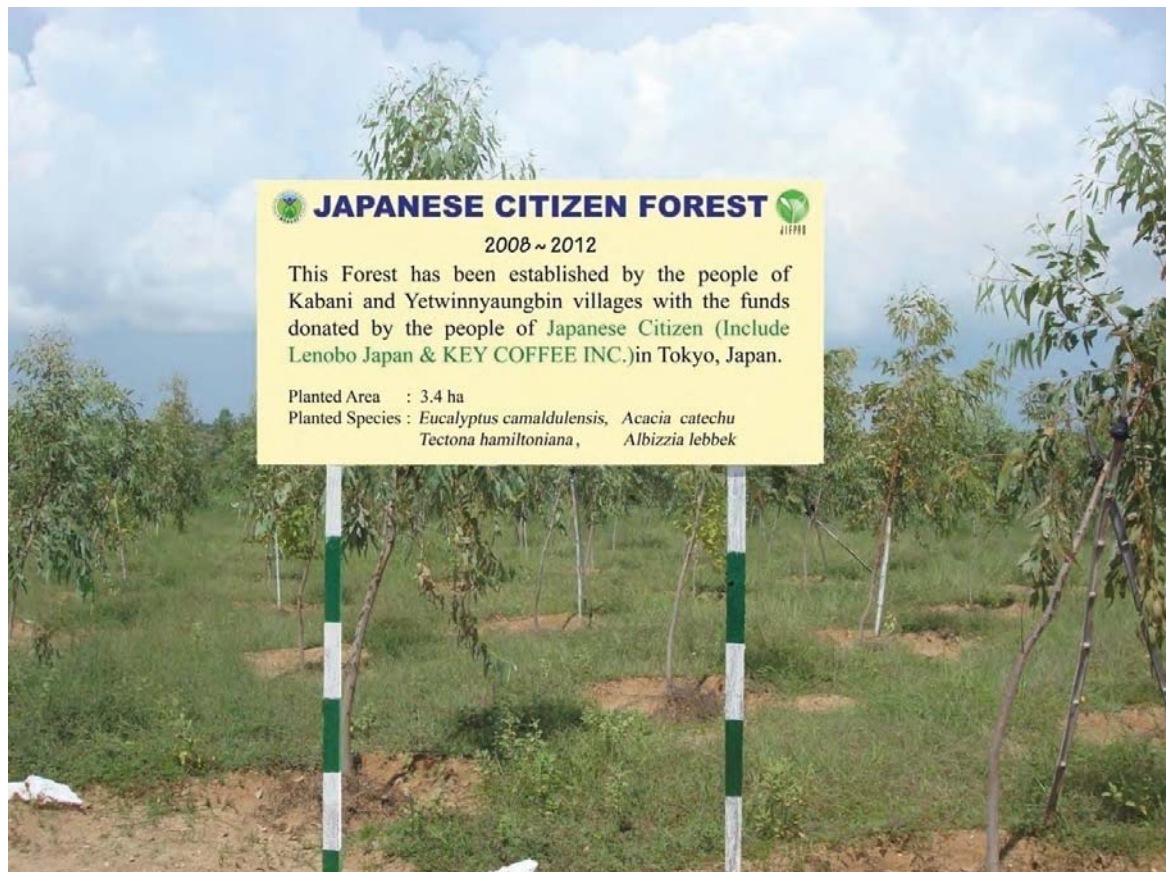


# ECO- POINT CO., LTD. FOREST



27

# JAPANESE CITIZEN CO., LTD. FOREST



28



## Accomplishment 2- Reaction of Local People (communities)

### Voice of local people;

- ✓ More job opportunities, more income
- ✓ More greening environment, More Forest Cover
- ✓ More fodder for cattle
- ✓ Reduce soil erosion
- ✓ Supply medicinal plants, housing materials and fuel wood
- ✓ Wind break for villages, farm land

29

## Supply fuel wood



30

## **Changes in awareness of forest itself and the management**

- JIFPRO project has been organizing training on community forestry, agroforestry, production of organic fertilizer.
- Those trainings upgraded local people's awareness concerning environmental conservation, their technical know how for higher production of agricultural crops, their knowledge on forest nursery practices and so on.
- More people love tree planting inside their residential compound, beside the agricultural land and near their village.

31

## **Awareness Raising Activities**



**Forest Nursery Practice**



**Schoolchildren's Participation in Tree Planting**

32



## **Study on Income Generation Opportunities**



33

## **Tree Planting inside the compound**



**Teak and Eucalypt trees planted in the compound**

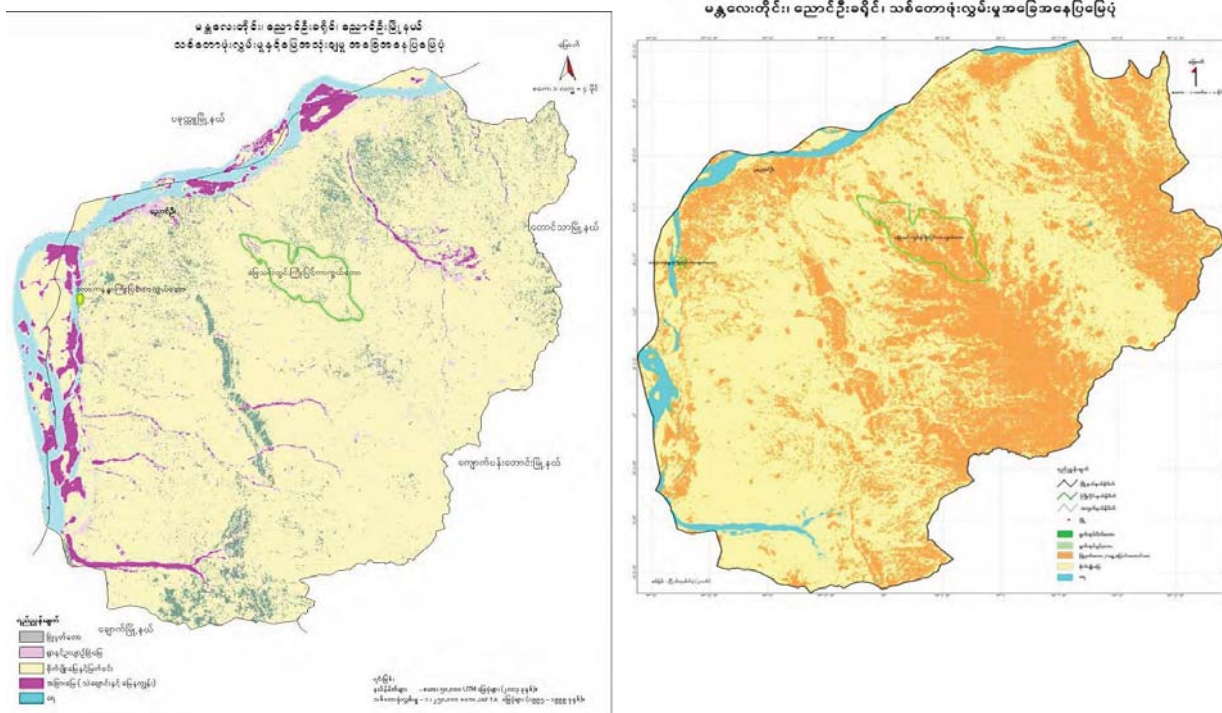
34

# People participation in reforestation and protection of forest

- ❑ Training participants can convey their awareness of protection and establishment of forests to others.
- ❑ During planting season, more villagers have been offering seedlings for planting trees year by year.
- ❑ Village woodlots can be found more.

## Accomplishment 3- Improving Environment Change in environment

- Forest cover map of(1995) and 2006 satellite map



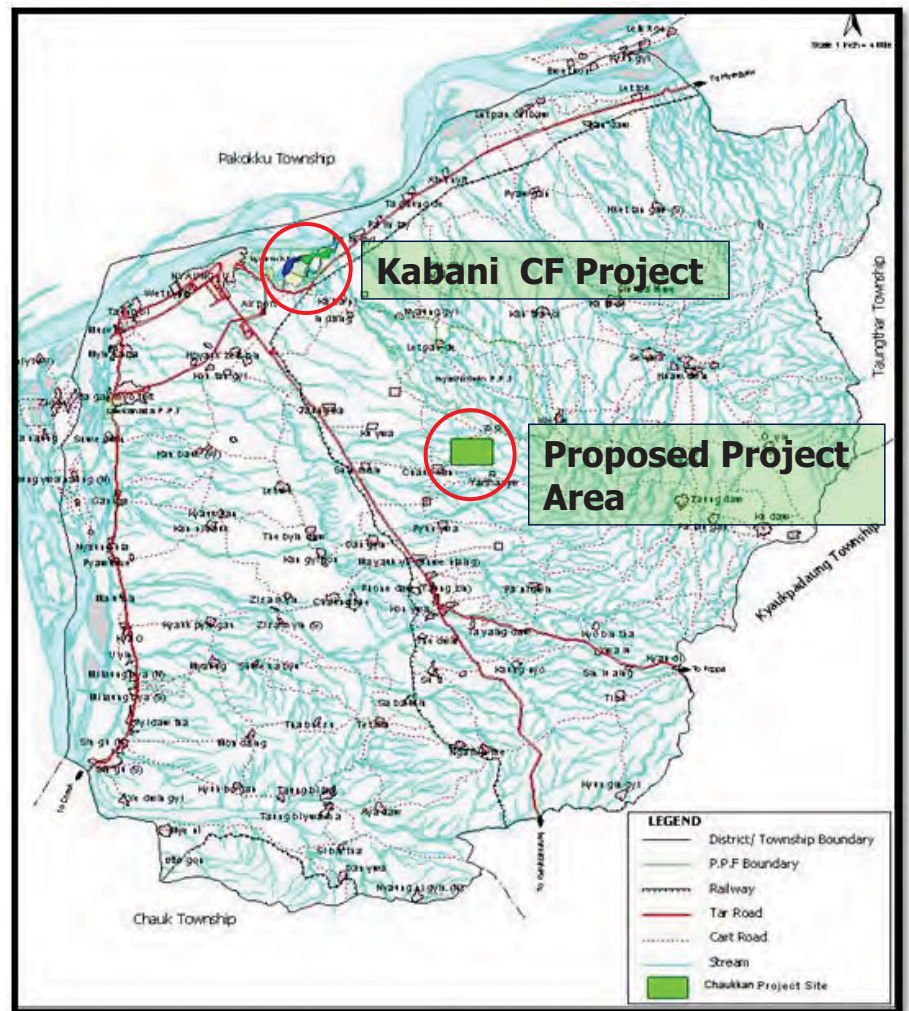
More Forest Cover in Project area, Nyaung Oo Township



## Proposed Project

### Establishment of Chaukkan CF

- ▶ 2012 ~ 2016
- ▶ Chaukkan village
- ▶ 90 ha



## Major Project Activities

- Establishment of forest plantation
  - ▶ Community forest plantation  
(with people's participation)
  - ▶ Watershed conservation plantation
- Conservation of remaining forests
  - ▶ Enrichment planting

## Nearby watershed plantation can maintain sustainable water resources depended by surrounding villages.



39

### ■ Capacity Building

- ▶ Training for local people
- ▶ Awareness raising programmes
- ▶ Extension activities





## ■ Efficient utilization of fuelwood

### 1. Distribution of efficient stoves



41

### 2. Use of Wood fuel substitutes



Use of Toddy Palm leaves



*Zizipus jujuba* fruit residues  
for fuel

### **III. FUTURE PROSPECT**

43

## **Future Prospect**

- According to the completed Projects, we can notice that socio-eco situation of local people has been developing and it is leading to poverty alleviation of the local communities.
- So, more contribution through such activities of the Projects will give the appreciation of our poor people resided in that Arid zone area.
- People of the project area eagerly hope your kindness and welcome your aid through such kind of Projects.
- And, I would like to express my sincere thanks on behalf of our people on this occasion.

44



## Conclusion

- From the perspective of local people:
  - ▶ Due to the significant positive impacts, it is sure that they got benefits from the project, satisfied upon the project activities and will continue participation in JIPFRO's Projects.
- From the perspective of FD and DZGD:
  - ▶ We consider that Project's activities contribute to the successful implementation of Dry Zone Re-greening programme so that we appreciate and welcome JIPFRO's Projects in the future as well.

45

ကျေးဇူးတင်ပါသည်။

**Kyay-Zu-Tin-Pa-Te**

**THANK YOU**

46